

CAPE & KANTARY
HOTELS



CAPE PANWA HOTEL
PHUKET, THAILAND



Beach Front

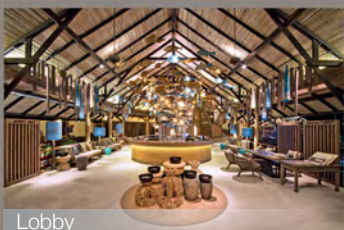
PERFECTLY RELAXING, BEAUTIFULLY SECLUDED, DISTINCTLY CAPE PANWA

Cape Panwa Hotel is located on the quiet southern tip of the east coast of Phuket Island. Built on an old coconut plantation on a hillside, it offers panoramic views of the Andaman Sea and a secluded, palm-fringed white sand beach. The sea adjacent to the beach is calm enough for swimming or water sports all year round as it is protected from the westerly winds. The hotel is self-contained, cosy and ideal for those seeking tranquility and natural surroundings. Unlike other hotels, Cape Panwa does not suffer from the ill effects of mass tourism. It is aimed at families and individual tourists who prefer a first-class hotel in a peaceful environment.

27, 27/2 Mu 8, Sakdidej Road, Cape Panwa, Phuket 83000, THAILAND.

Tel. 66 (0)76 391 123-5

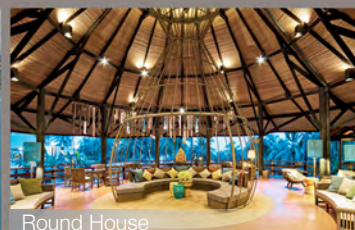
Email: reservations@capepanwa.com



Lobby



Bird's Eye View



Round House



ACCOMMODATION

Set in lush tropical gardens with a low-rise architectural design that blends perfectly with the natural beauty of the cape and bay area, Cape Panwa Hotel offers a superb selection of sea-facing suites and villas, all luxuriously appointed with modern, five star in-room amenities and large balconies.

Junior Suite

(55 units) Room Size: 53 sq.m.

Our Junior Suites are spacious and comfortable and feature everything required for a relaxing and comfortable stay including private balcony, furnished with a large sunbed.

Cape Suite

(126 units) Room Size: 78 sq.m.

A range of features includes a large sunbed, spacious, modern bathrooms and tastefully decorated living and sleeping spaces.

Cape Signature Suite

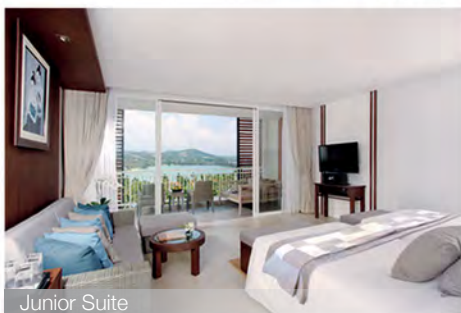
(2 units) Room Size: 78 sq.m.

Our Cape Signature Suite features an extended sun-deck with an outdoor whirlpool and incredible views of the turquoise Sea.

Cape Signature Corner Suite

(2 units) Room Size: 127 sq.m.

Commanding sweeping panoramic views over the Andaman Sea, the Cape Signature Suites are much sought after by celebrities and royalty alike. The sprawling suites feature large balconies and luxuriously appointed indoor living spaces.



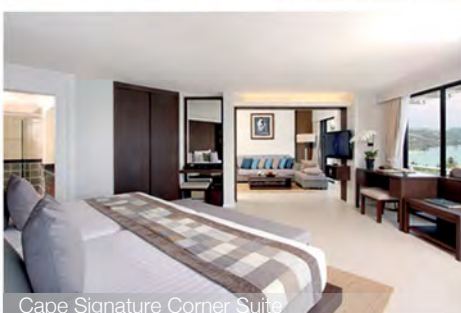
Junior Suite



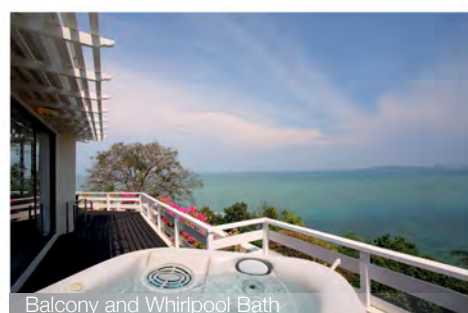
Cape Suite



Cape Signature Suite



Cape Signature Corner Suite



Balcony and Whirlpool Bath



Pool Villa

ACCOMMODATION

Family Suite

(12 units) Size: 114sq.m.

Our Family Suites combine a luxurious Cape Suite with an adjoining Superior Room, offering all the facilities of the Cape Suite with the comfort and style of our newly renovated Superior Rooms.



Family Suite

Pool Villa

(6 units) Room Size: 138sq.m.

Each elegantly appointed Pool Villa features a large private pool facing the sea, two separate bedrooms with large bathrooms as well as a comfortable living room.



Pool Villa

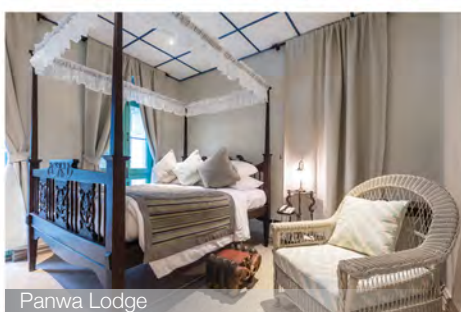
Panwa Lodge

(1 unit) Size: 154sq.m.

This three-bedroom, private house is located a few steps from the beach in a peaceful coconut grove. Featuring its own private pool, Panwa Lodge's architecture and interior design date back to the Sino-Portuguese era in Phuket's history.



Panwa Lodge



Panwa Lodge



Living Room

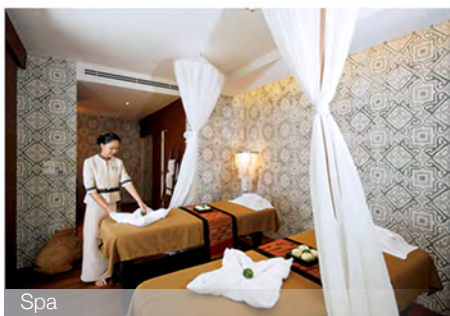
ACCOMMODATION

The Cape Absolute Suite

A baronial penthouse with awe-inspiring 360-degree views over the magnificent Andaman Sea from every angle, The Cape Absolute Suite boasts 530 square metres of understated tropical luxury over two glass-encased floors. Featuring two bedrooms, separate living and dining rooms, a private spa facility, large solid wooden sun decks and a full-sized infinity pool, it offers the absolute holiday experience...whilst being steps away from the resort's private palm-fringed beach and extensive facilities, including 10 restaurants and bars.



Bedroom 2nd Floor



Spa



Swimming Pool

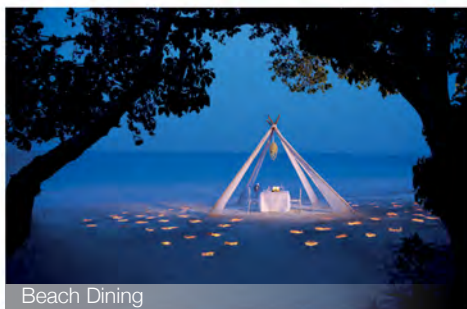


View Over the Bay



HOTEL SERVICES & FACILITIES

- Secluded 300 metre sandy beach
 - 2 swimming pools
 - Fitness Centre and sauna
 - Games room
 - Children's playground
 - Cape Lounge
 - Complimentary Wi-Fi access in all areas
 - Meeting facilities
 - Restaurants and bars
 - Water sports
 - Thai massage in the garden
 - Cape Spa
 - Beauty salon
 - Cape Yacht Charters
 - Panwa Bay Village shopping centre
 - Weddings
 - Airport transfer-Phuket International Airport (45 km).
 - By private minivan @ 1,200 THB net each way
 - By private limousine @ 2,800 THB net each way
- *Prices are subject to change without prior notice.



Beach Dining



Panwa Princess



Wedding Terrace



Swimming Pool

Revitalise your body and soul in a stylish and spacious facility where sunlight and tranquility blend with superlative service. The Cape Spa offers an extensive range of massages and treatments using only the finest products and techniques to ensure that you are pampered to perfection.

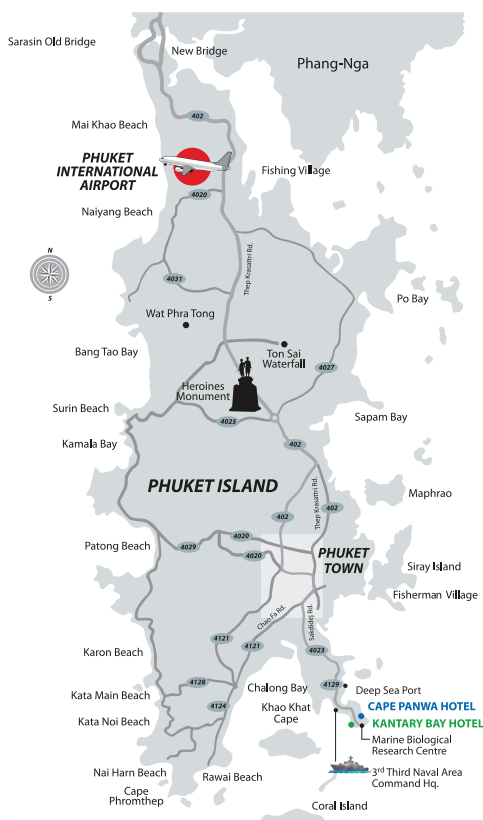




Café Andaman

DINING AT CAPE PANWA

HOTEL & PHUKET MAP



Restaurants

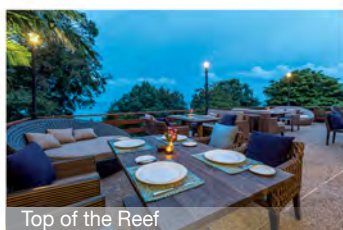
- **Café Andaman** : Casual, all-day Thai and international dining.
Opening hours: 06.30 – 23.00 hours
- **Panwa House** : Fine Thai dining.
Opening hours: 18.30 – 23.00 hours
(Closed on Mondays)
- **Top of The Reef** : Continental gourmet cuisine, French fine dining
Opening hours: 18.30 – 23.00 hours
(Closed on Wednesdays and Sundays)
- **Uncle Nan's Restaurant** : Classic Italian cuisine.
Opening hours: 18.30 – 23.00 hours
(Closed on Tuesdays)
- **Café Kantary** : Premium coffee, home made pastries and gelato.
Opening hours: 08.00 – 23.00 hours
- **Beach Dining** : Private dining on the beach provided upon request for small and large groups

Bars

- **Otter's Bar** : Piano and lounge bar.
Opening hours: 17.00 – 23.00 hours
(Closed on Wednesdays and Sundays)
- **The Lighthouse** : Nautical themed pub with live music.
Opening hours: 17.00 – 01.00 hours
(Closed on Monday and Tuesday)
- **Bamboo Bar** : Beachside snacks and drinks.
Opening hours: 09.00 – 20.00 hours
(Kitchen at 10.00 – 19.00 hours)

Room Service

Room service is available 24 hours and serves a wide range of Thai and international dishes.



Top of The Reef



Panwa House



Bamboo Bar



The Lighthouse

CAPE & KANTARY HOTELS



CAPE HOTEL COLLECTION

www.capecollection.com



KANTARY COLLECTION
HOTELS & SERVICED APARTMENTS

www.kantarycollection.com



KAMEO COLLECTION
BY CAPE & KANTARY
HOTELS & SERVICED APARTMENTS

www.kameocollection.com

Cape & Kantary Hotels (Bangkok Sales Office)

5th Floor, B.L.H. Building, 7/1 Wireless Road, Lumpini, Pathumwan, Bangkok 10330, THAILAND

Tel: +66 (0) 2253 3791-7

Email: enquiries@capekantaryhotels.com

Australia & New Zealand (Sales Office)

Travel Loop Representation

Tel: +61 (0) 499 987 111

Email: charlie@travelloop.com.au

London UK (Sales Office)

Flat 8, 51 Queens Gate Terrace, London SW7 5PL

Tel: +44 (0) 207 581 8281

Email: debbiehaw@aol.com

Switzerland (Sales Office)

Keksconsulting KLG, Bierhausstrasse 28 CH-1712 Tavers Switzerland

Tel. +41 (0) 76 603 5828

Email: info@keksconsulting.com

The descriptions of facilities and services in this brochure are intended only as a guide. Where every effort has been made to ensure accuracy at the time of printing, specifics may change in response to customer needs or as a result of renovation. Please contact the property direct to confirm the information in this brochure.

© Copyright 2024 Kasemkij Co All Rights Reserved